



Delivery Date	<i>April 29, 2016</i>
Deliverable	<i>Final Statistical Report</i>
Action	<i>Needs and expectations survey</i>
Author	<i>Pôle Mer Bretagne Atlantique</i>
Progress	<ul style="list-style-type: none">▪ <i>Survey Online since: 23/02/2016</i>▪ <i>Survey opened for 2 months</i>▪ <i>First report based on 199 responses on March 14, 2016</i>▪ <i>Final Report based on 212 responses on April 22, 2016</i>

FOREWORD

OBJECTIVES

BlueBRIDGE aims to deploy services to different target audiences identified as potential end users. It became then essential to identify early in the project the needs of these stakeholders about the management and processing of data concerning fishing, aquaculture and environment sectors at European level. It will allow developing services and tools that meet end users expectations.

IMPLEMENTATION

The survey was sent to the Pôle Mer Bretagne Atlantique contact database on February 23, 2016.

A first statistical treatment was carried out on March 14, 2016 on 199 responses, 3 weeks after it went online.

The present final report is based on 212 responses on April 22, 2016.

DOCUMENT PLAN

- 1. Global figures**
 - 1.1. Figures per questions
 - 1.2. Conclusions
- 2. Focus on services and functionalities**
- 3. Focus on private companies**
 - 2.1. Figures per question
 - 2.2. Conclusions
- 4. Focus on academics**
 - 4.1. Figures per question
 - 4.2. Conclusions
5. Annex 1 - Survey

NOTE

151 responses are fully filled but it does not mean that they are completed as respondents had the possibility to skip some questions. Indeed, it was not mandatory for respondent to fulfill the whole survey. It was still decided to take in account all the responses that were giving information even if the survey was not completed.

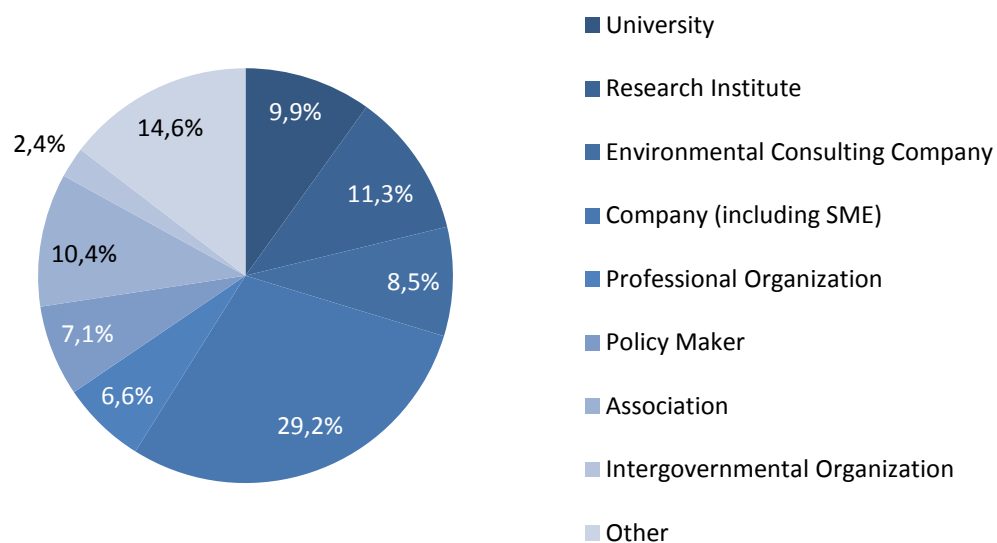
Answers options were not exclusive. It must be considered in the results interpretation that a respondent may have ticked several or all possible answers.

1. Global figures

1.1. Figures per questions

Question 2

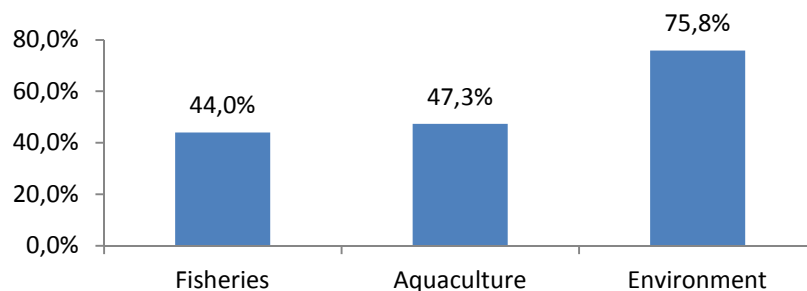
What is your organization type?		
Answer Options	Response Percent	Response Count
University	9,9%	21
Research Institute	11,3%	24
Environmental Consulting Company	8,5%	18
Company (including SME)	29,2%	62
Professional Organization	6,6%	14
Policy Maker	7,1%	15
Association	10,4%	22
Intergovernmental Organization	2,4%	5
Other	14,6%	31
<i>answered question</i>		212
<i>skipped question</i>		0



“Others” are mainly public bodies.

Question 3

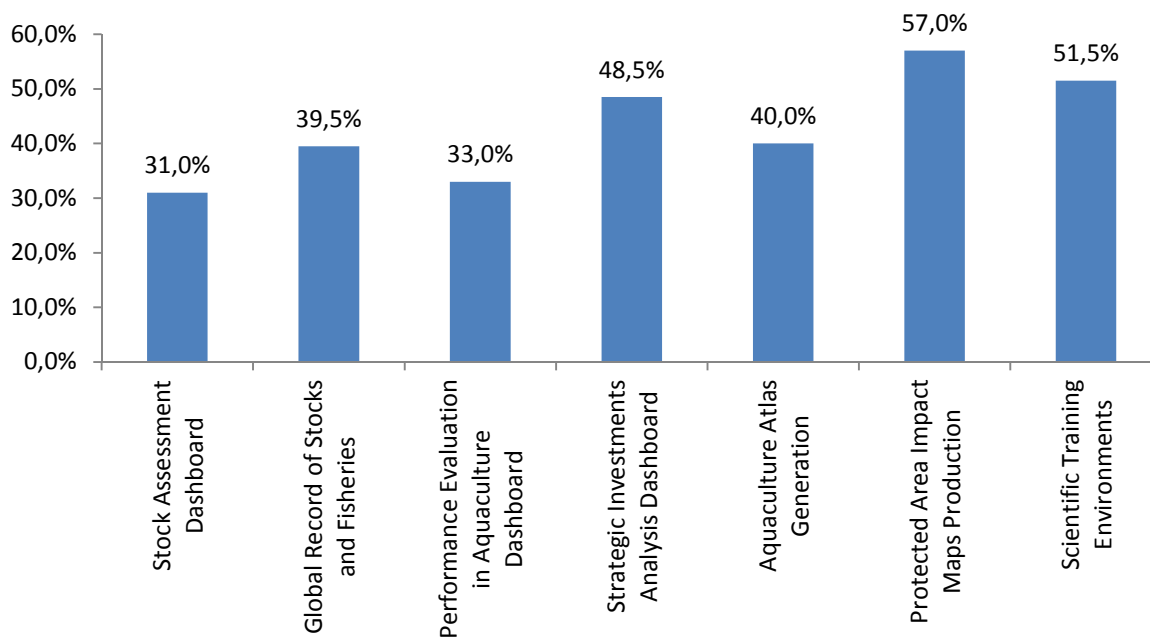
What are the domains in which you are interested in?		
Answer Options	Response Percent	Response Count
Fisheries	44,0%	91
Aquaculture	47,3%	98
Environment	75,8%	157
<i>answered question</i>		207
<i>skipped question</i>		5



Question 4

What are the BlueBRIDGE services that might be of interest to you?

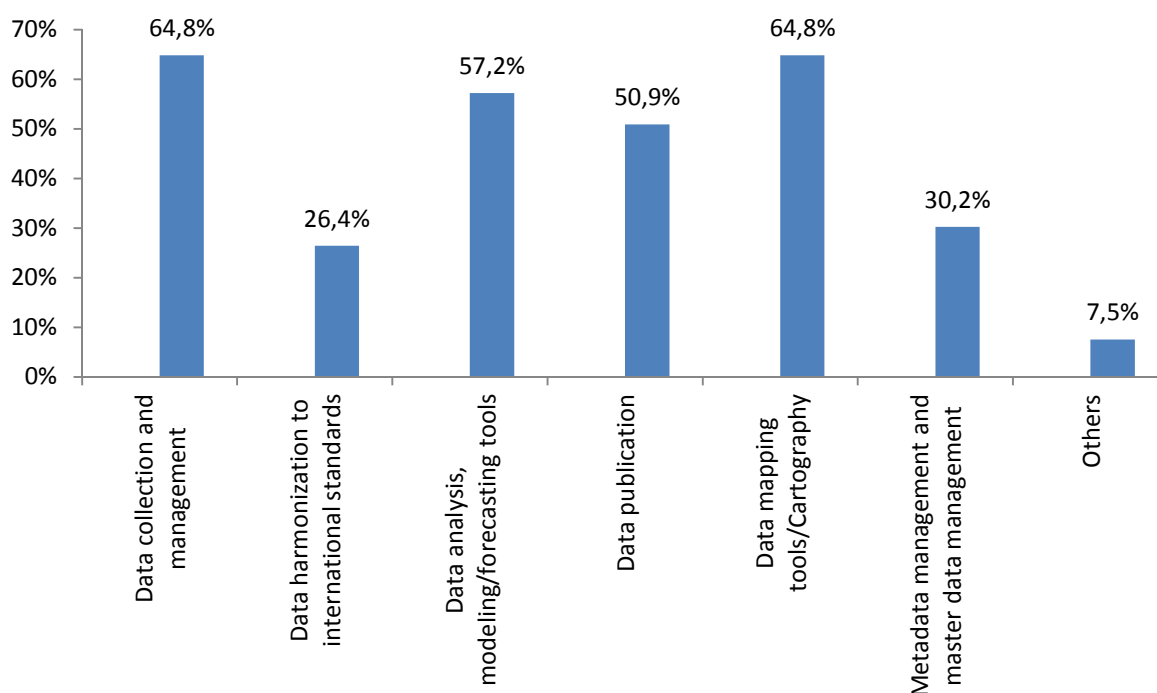
Answer Options	Response Percent	Response Count
Stock Assessment Dashboard	30,3%	57
Global Record of Stocks and Fisheries	38,8%	73
Performance Evaluation in Aquaculture Dashboard	33,0%	62
Strategic Investments Analysis Dashboard	48,4%	91
Aquaculture Atlas Generation	41,0%	77
Protected Area Impact Maps Production	54,8%	103
Scientific Training Environments	52,1%	98
<i>answered question</i>		188
<i>skipped question</i>		11



Question 5

Which key functionalities of the BlueBRIDGE services might interest you?

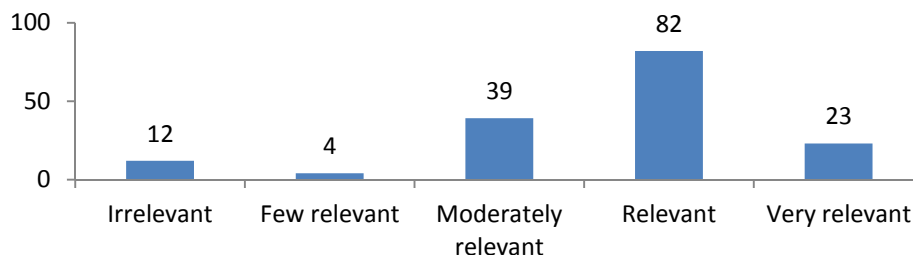
Answer Options	Response Percent	Response Count
Data collection and management	64,8%	103
Data harmonization to international standards	26,4%	42
Data analysis, modeling/forecasting tools	57,2%	91
Data publication	50,9%	81
Data mapping tools/ Cartography	64,8%	103
Metadata management and master data management	30,2%	48
Other	7,5%	12
<i>answered question</i>		159
<i>skipped question</i>		53



Question 6

Do you think the tools and services offered by the BlueBRIDGE project are relevant for your activity?

Answer Options	Response Percent	Response Count
Irrelevant	7,3%	11
Few relevant	2,7%	4
Moderately relevant	24%	36
Relevant	51%	77
Very relevant	15%	22
<i>answered question</i>		150
<i>skipped question</i>		49



Question 7: Can you explain why?

Here are listed several examples of answers given by respondents:

Very relevant - Relevant

Data harmonization is particularly necessary in the context of a common and shared work. The access to functionalities such as mapping or data publishing is a + for associations (ease of access and understanding)
- **Association**

They seem to cover a good range of functionalities necessary for research use
- **Association**

It currently lacks
- **Public body**

Applicable to the reality
- **Company**

They will allow us to better understand the environment and its dynamics to better advise the fisheries and aquaculture sector
- **Research Institute**

Data is increasingly indispensable for understanding, analyzing and proposing management measures. Data banking tools, interoperability, analysis and retrieval (by mapping particular but also in the form of graphics and interactive digits) are required to value datasets
- **Association**

These tools seem efficient
- **University**

Highly relevant to facilitate the dissemination and use of data by the largest number (homogeneous, reliable and traceable)
- **Research Institute**

For monitoring the evolution of environmental quality, uses and pressures
- **Public body**

Inventorying data and qualifying it is the basis of all study
- **Intergovernmental organization**

The proposals largely scan multiple fields of representative activities
- **Public body**

Moderately relevant

This is much targeted on fishing as a production tool, but nothing appears on fishing as one use of the aquatic environment which must be reconciled with other uses of the marine environment. No ecological approach to fisheries, the approach proposed is only economic
- **Policy maker**

Data already available on many websites (ORP, ICES, FAO ...)
- **University**

I do not see what differentiates the tools mentioned above of many existing and effective tools
- **Association**

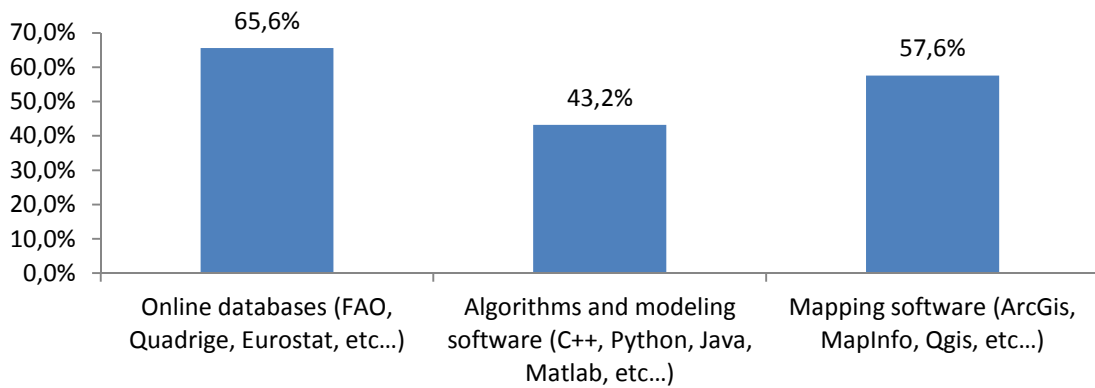
The main difficulty is nestled in the validity of banked data, particularly in the fisheries sector, often making any downstream operation, no real relevance – Public body	Who will pay for this data? – Company
Ignores landed biomass, only those at sea – Association	Access to data and their quality to improve confidence – Research institute
I do not get too concretely what your project is. What it is going to bring more compared to the existing – Research institute	Lack of functionalities – Company
	Databases provide accuracy and help decision making. This research helps to support professional with more transparency. Real instrument in favor of collaboration, consultation of data that can be done anytime and from anywhere! – Company

Few relevant - Irrelevant

There are already many databases. What is missing is more their analysis than their management – University	Certainly for a business (large or medium) in a context of productivity and competitiveness but not for small company – Company
Few business data or market analyzes – Company	As all scientific projects, little commercial value – Company
We need a data monitoring in time on constant parameters to find out about what is happening at sea. The quality and consistency of observation should be preferred on the abundance of data – Public body	

Question 8

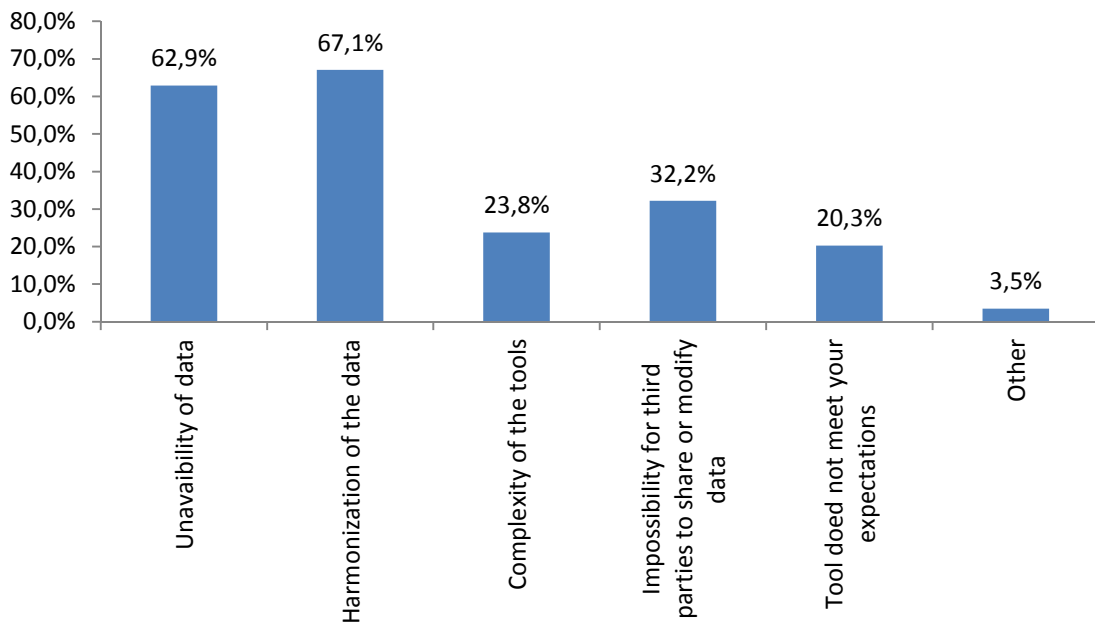
Within the framework of your current activities, do you use?		
Answer Options	Response Percent	Response Count
Online databases	65,6%	82
Algorithms and modeling software	43,2%	54
Mapping software	57,6%	72
	<i>answered question</i>	125
	<i>skipped question</i>	87



Question 9

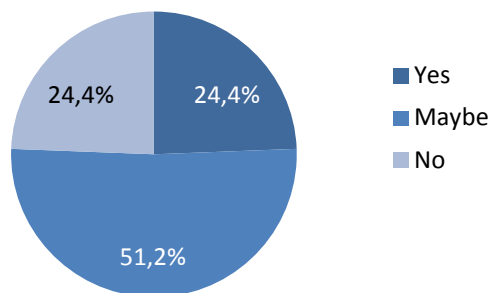
Below you can find some common issues encountered by stakeholders working in the marine/maritime field. Do you think BlueBRIDGE solutions may help you to overcome some of them?

Answer Options	Response Percent	Response Count
Unavailability of data	62,9%	90
Harmonization of the data	67,1%	96
Complexity of the tools	23,8%	34
Impossibility for third parties to share or modify data	32,2%	46
Tool does not meet your expectations	20,3%	29
Other	3,5%	5
answered question		143
skipped question		69



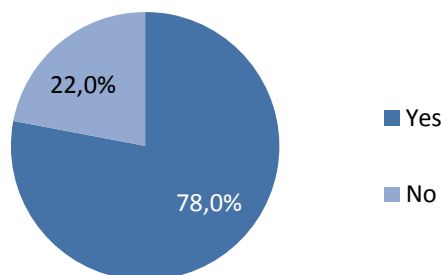
Question 11

Would you be interested to attend a workshop presenting the different tools and services offered by the BlueBRIDGE project?		
Answer Options	Response Percent	Response Count
Yes	24,4%	40
Maybe	51,2%	84
No	24,4%	40
<i>answered question</i>		164
<i>skipped question</i>		48



Question 12

Would you be interested in receiving the BlueBRIDGE newsletter?		
Answer Options	Response Percent	Response Count
Yes	78,0%	128
No	22,0%	36
<i>answered question</i>		164
<i>skipped question</i>		48



1.2. Conclusions

First of all, some data shows a definite interest of survey respondents for the project, its services and tools, indeed:

- More than three quarters of the respondents want to subscribe to the newsletter.
- Approximately 25% would like to attend a workshop at which can be added 50% of respondents who answered “maybe”.

Some results:

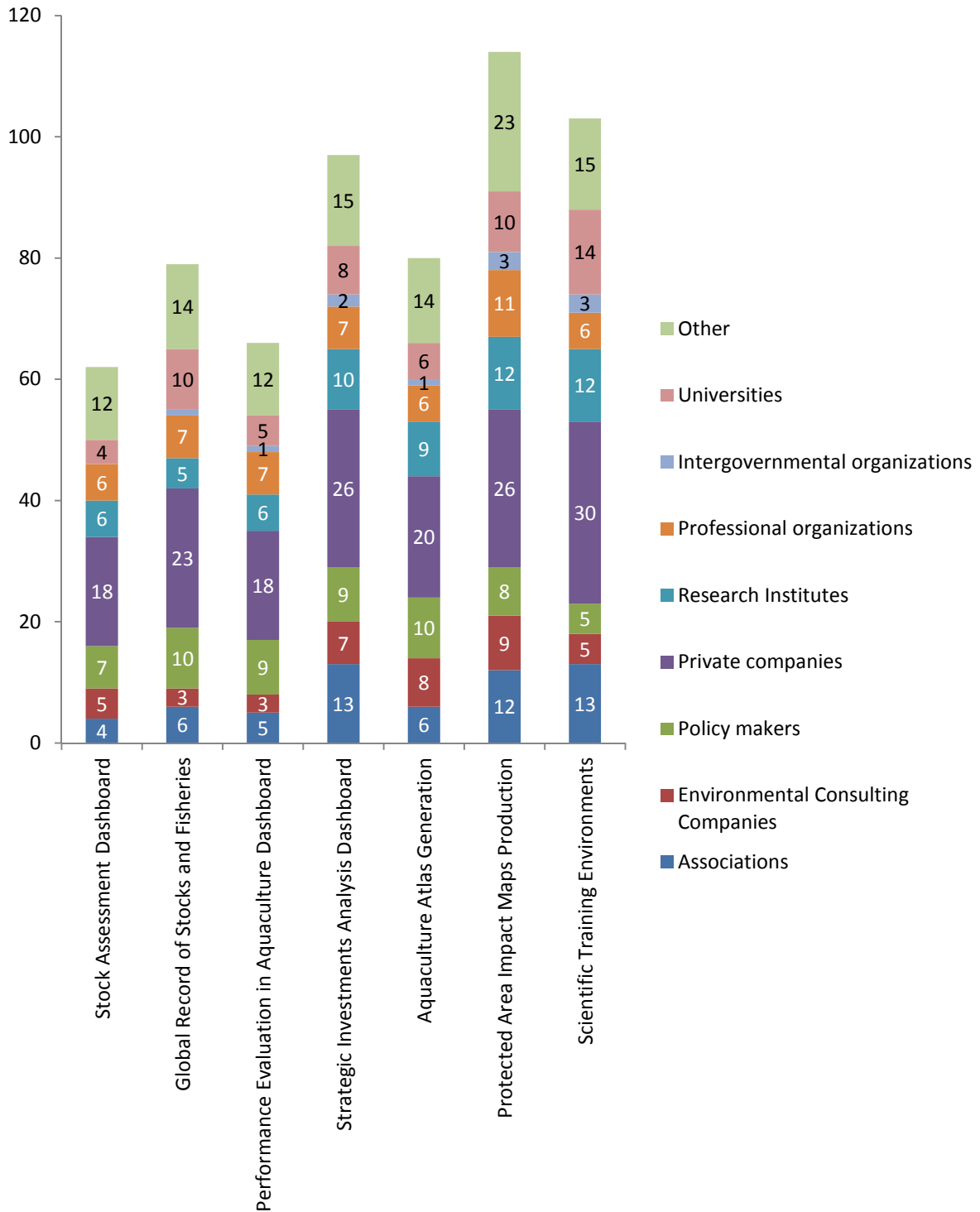
- Intergovernmental organizations are very few present in the panel of survey respondents while a third of respondents are private companies. The other types of organizations are fairly equally represented.
- Respondents mostly represent the environmental sector, it is therefore logical that the VRE “Protected Area Impact Maps” comes out as the most interesting (54.8%). It is closely followed by the VRE “Scientific Training Environments” and then comes “Strategic investments in Aquaculture” which interests mostly private companies.
- The most mentioned functionalities are “cartography and mapping tools” and “data collection”. The “harmonization of data” and “metadata management” functionalities turn out to be less attractive to respondents.
- Half of respondents find that services and tools that will be developed during the project are relevant (15% found them very relevant). Less than 8% find little interest.
- 2/3 of respondents already use online databases. The tools less commonly used by respondents are modeling software and algorithms.
- Respondents believe that the project could help filling a lack of data and could help overcoming the problem of data harmonization at international level as well.

Furthermore, some results highlight some contradictions.

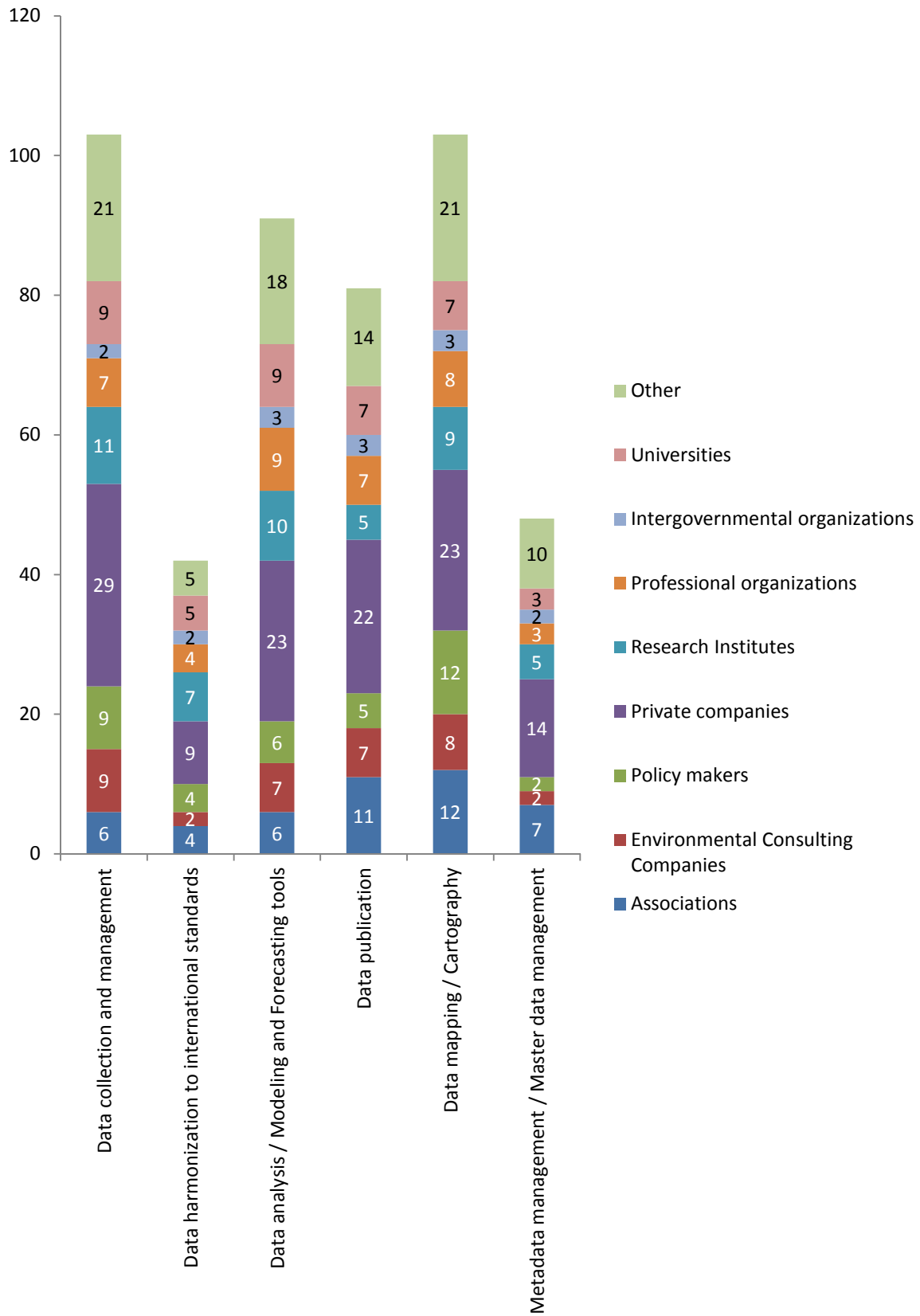
For example, 67% of the question 9’s respondents think that the project services could help resolving harmonization issues despite that only 26% of the question 5’s respondents think that the harmonization of the data is a relevant functionality.

2. Focus on services and functionalities

2.1. Services



2.2 Functionalities



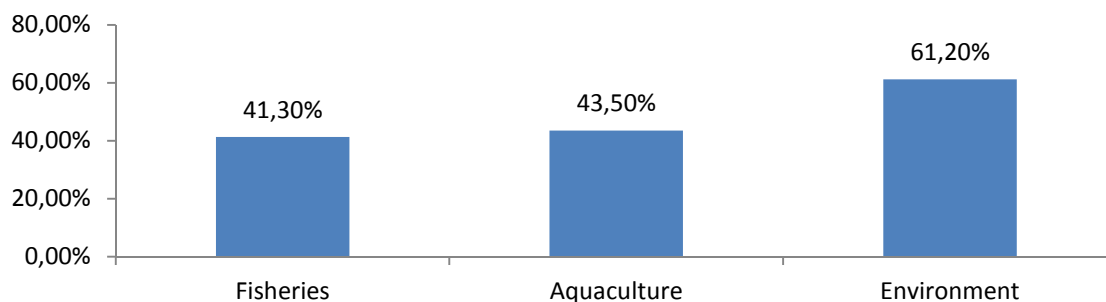
3. Focus on Private companies

62 private companies (including SMEs) have filed the survey.

3.1. Figures per questions

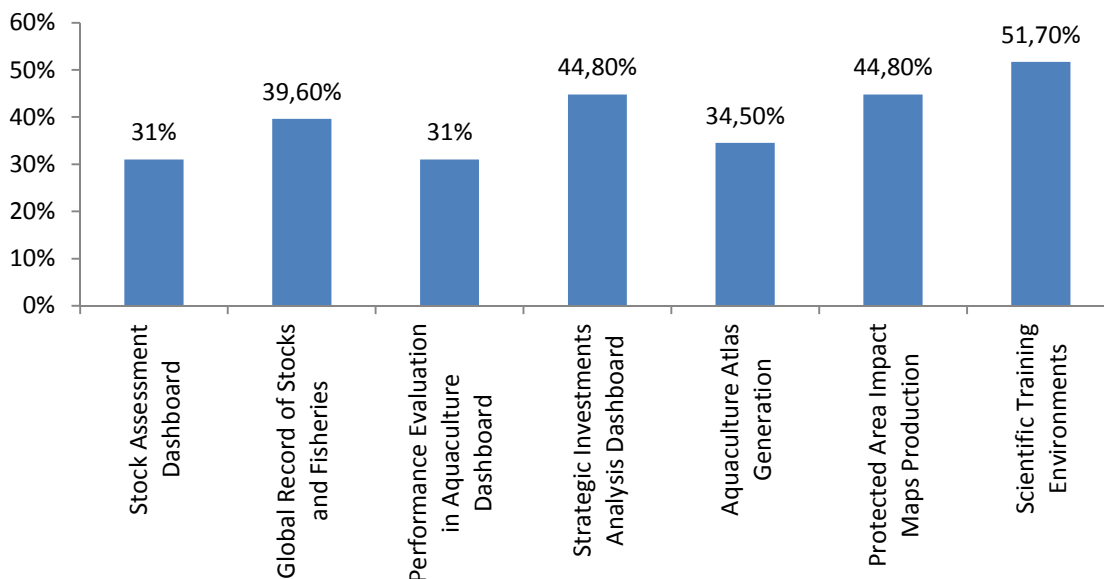
Question 3

What are the domains in which you are interested in?		
Answer Options	Response Percent	Response Count
Fisheries	41.3%	25
Aquaculture	43.5%	27
Environment	61.2%	38
<i>answered question</i>		62
<i>skipped question</i>		0



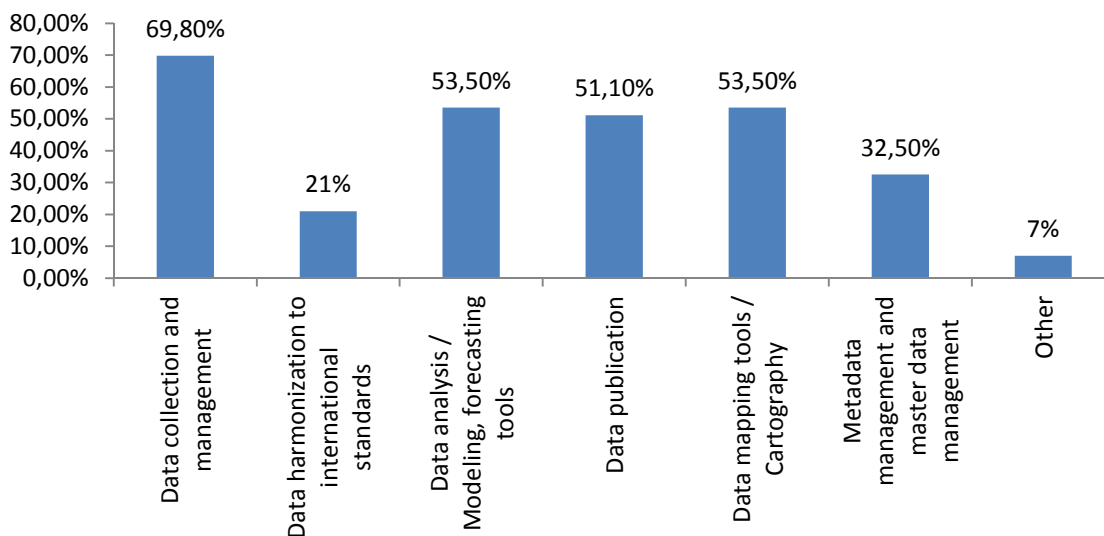
Question 4

What are the BlueBRIDGE services that might be of interest to you?		
Answer Options	Response Percent	Response Count
Stock Assessment Dashboard	31%	18
Global Record of Stocks and Fisheries	39.6%	23
Performance Evaluation in Aquaculture Dashboard	31%	18
Strategic Investments Analysis Dashboard	44.8%	26
Aquaculture Atlas Generation	34.5%	20
Protected Area Impact Maps Production	44.8%	26
Scientific Training Environments	51.7%	30
<i>answered question</i>		58
<i>skipped question</i>		4



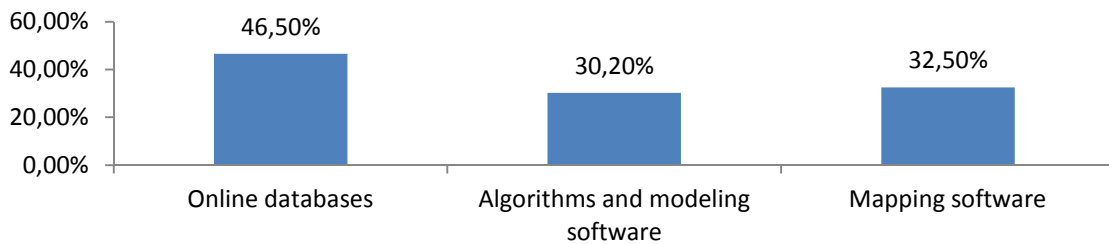
Question 5

Which key functionalities of the BlueBRIDGE services might interest you?		
Answer Options	Response Percent	Response Count
Data collection and management	69.8%	30
Data harmonization to international standards	21%	9
Data analysis / Modeling, forecasting tools	53.5%	23
Data publication	51.1%	22
Data mapping tools / Cartography	53.5%	23
Metadata management and master data management	32.5%	14
Other	7%	3
answered question		43
skipped question		19



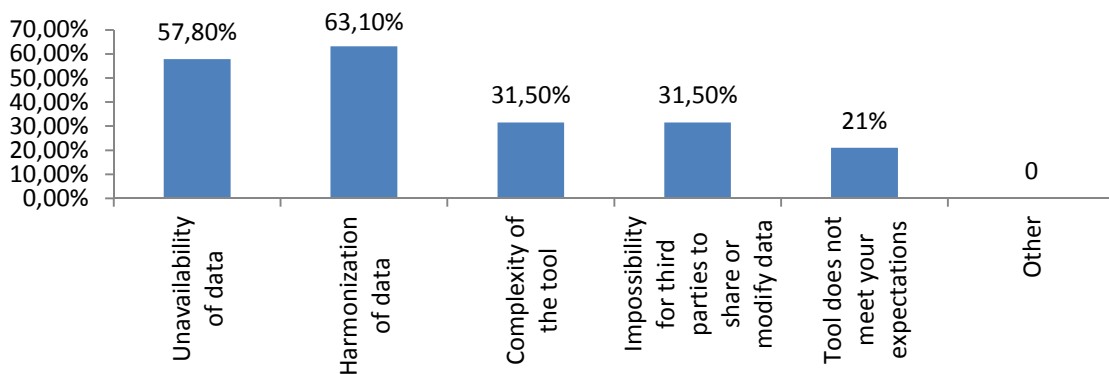
Question 8

Within the framework of your activity, do you use?		
Answer Options	Response Percent	Response Count
Online databases	46.5%	20
Algorithms and modeling software	30.2%	13
Mapping software	32.5%	14
answered question		43
skipped question		19



Question 9

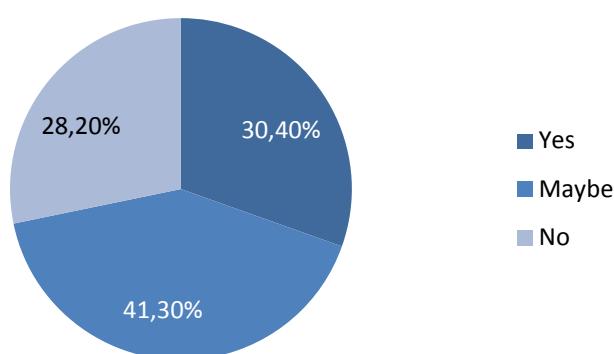
Do you think BlueBRIDGE solutions may help you to overcome some of the common issues encountered by users and indicated below?		
Answer Options	Response Percent	Response Count
Unavailability of data	57.8%	22
Harmonization of data	63.1%	24
Complexity of the tool	31.5%	12
Impossibility for third parties to share or modify data	31.5%	12
Tool does not meet your expectations	21%	8
Other	-	0
answered question		38
skipped question		24



Question 11

Would you be interested to attend a workshop presenting the different tools and services offered by the BlueBRIDGE project?

Answer Options	Response Percent	Response Count
Yes	30.4%	14
Maybe	41.3%	19
No	28.2%	13
<i>answered question</i>		46
<i>skipped question</i>		16



2.2. Conclusions

62 private companies responded, representing roughly 30% of surveys. This is encouraging in order to find “Interested parties”.

Here are some first conclusions we can draw from these results:

- These companies are mostly identified as working in the environment field (61.2%) and in a relatively similar proportion in the fishing and aquaculture sectors (respectively 41.3% and 43.5%).
- More than a half of private companies are interested in the scientific training VRE which is a surprise considering that it is rather intended to universities or research institutes.
- The second services of interest for private companies are “Strategic investments in Aquaculture” which makes sense since this is the most interesting service in a business perspective and “Protected area impact maps”.
- Private companies are very interested in the functionality “data collection and management”, so we can therefore assume that they want to use the services as a database.
- As a matter of fact, 46.5% of private companies have declared that they already use online databases.
- Some of the functionalities that will be developed in the different VREs are less interesting for them such as harmonization of the data (21%) and metadata management (32.5%).

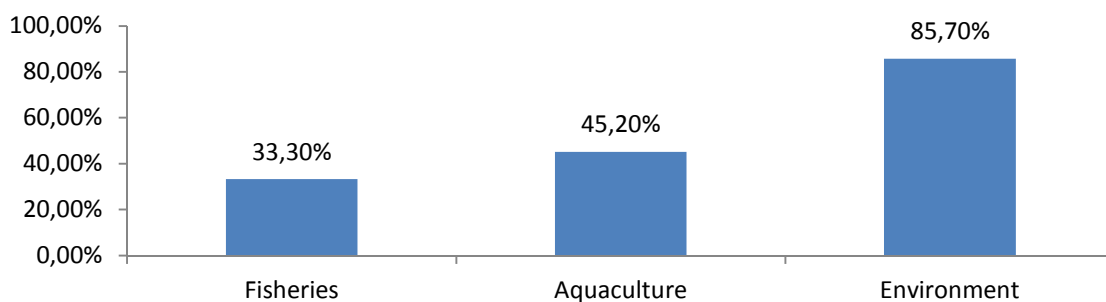
4. Focus on academics

This focus is based on 45 responses since we consider in this category, both universities and research institutes, ie 1/5 of the respondents.

4.1. Figures per questions

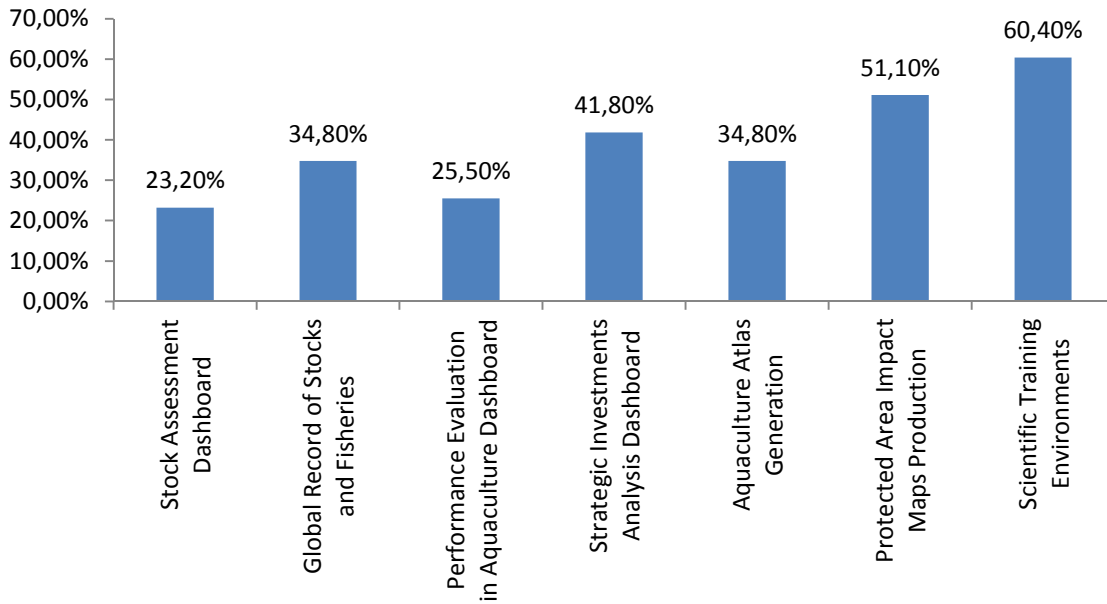
Question 3

What are the domains in which you are interested in?		
Answer Options	Response Percent	Response Count
Fisheries	33.3%	14
Aquaculture	45.2%	19
Environment	85.7%	36
<i>answered question</i>		42
<i>skipped question</i>		3



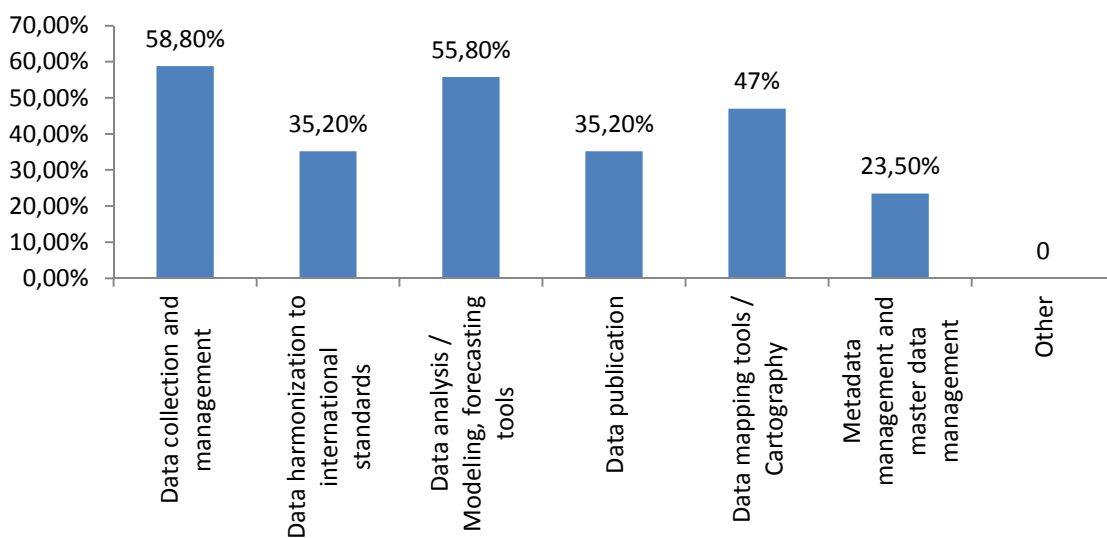
Question 4

What are the BlueBRIDGE services that might be of interest to you?		
Answer Options	Response Percent	Response Count
Stock Assessment Dashboard	23.2%	10
Global Record of Stocks and Fisheries	34.8%	15
Performance Evaluation in Aquaculture Dashboard	25.5%	11
Strategic Investments Analysis Dashboard	41.8%	18
Aquaculture Atlas Generation	34.8%	15
Protected Area Impact Maps Production	51.1%	22
Scientific Training Environments	60.4%	26
<i>answered question</i>		43
<i>skipped question</i>		2



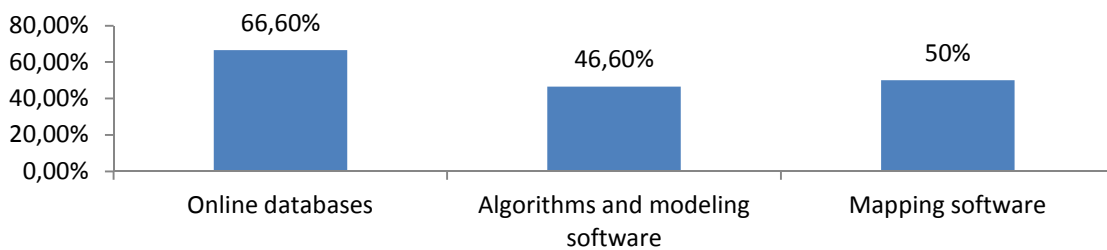
Question 5

Which key functionalities of the BlueBRIDGE services might interest you?		
Answer Options	Response Percent	Response Count
Data collection and management	58.8%	20
Data harmonization to international standards	35.2%	12
Data analysis / Modeling, forecasting tools	55.8%	19
Data publication	35.2%	12
Data mapping tools / Cartography	47%	16
Metadata management and master data management	23.5%	8
Other	-	0
answered question		34
skipped question		11



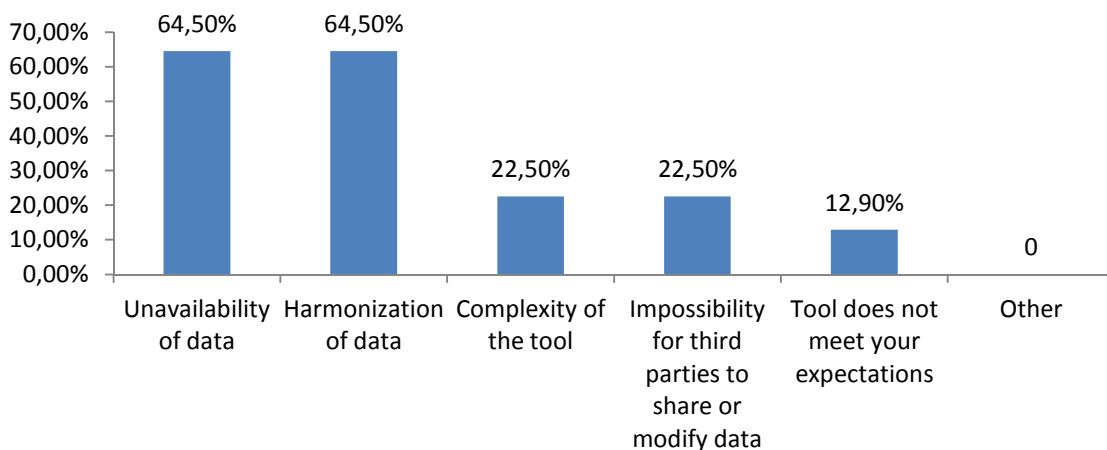
Question 8

Within the framework of your activity, do you use?		
Answer Options	Response Percent	Response Count
Online databases	66.6%	20
Algorithms and modeling software	46.6%	14
Mapping software	50%	15
answered question		30
skipped question		15



Question 9

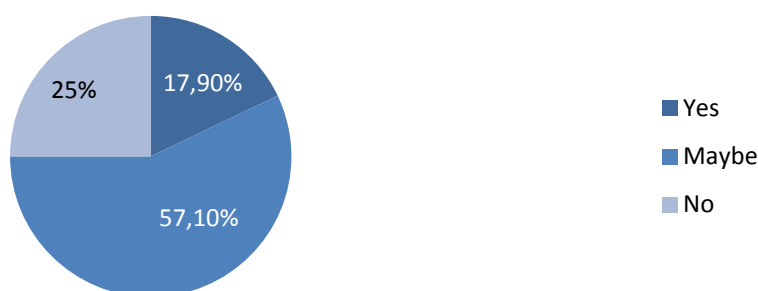
Do you think BlueBRIDGE solutions may help you to overcome some of the common issues encountered by users and indicated below?		
Answer Options	Response Percent	Response Count
Unavailability of data	64.5%	20
Harmonization of data	64.5%	20
Complexity of the tool	22.5%	7
Impossibility for third parties to share or modify data	22.5%	7
Tool does not meet your expectations	12.9%	4
Other	-	0
answered question		31
skipped question		14



Question 11

Would you be interested to attend a workshop presenting the different tools and services offered by the BlueBRIDGE project?

Answer Options	Response Percent	Response Count
Yes	17.9%	5
Maybe	57.1%	16
No	25%	7
<i>answered question</i>		28
<i>skipped question</i>		17



3.2. Conclusions

Respondents from universities and research institutes who answered the survey are from a major part linked to the environment sector (85.7%).

The VRE that interest them the most is, without surprise, “Scientific training environment” (60.4%) followed by the “Protected Area Impact Maps” VRE (51.1%) what makes sense given that most of them are working on environmental issues.

The main functionalities that interest them are “data collection and management” (58.8%), “data analysis/modeling and forecasting tools” (55.8%) and “mapping tools/cartography” (47%).

Two thirds of them already use online databases and nearly half use modeling and mapping software for their current activities.

The most common issues linked to the utilization of such tools that they think BlueBRIDGE services would overcome are “Unavailability of data” and “Harmonization of data” (64.5% both).

These stakeholders seem to be interested by the project and its results given that three quarters of the respondents want or may want to attend a workshop presenting the BlueBRIDGE services and functionalities.

Annex 1. Survey



Building Research environments fostering Innovation, Decision making,
Governance and Education to support Blue Growth



Expectations and needs survey

The **BlueBRIDGE** project (www.bluebridge-vres.eu, European Commission - H2020) aims at providing innovative services for data collation, analysis and publication in the domains of fisheries, aquaculture and environment.

These services can serve the needs of different users of the marine and maritime sector such as companies, research institutes, policy makers, students or intergovernmental organizations.

As an example, users of **BlueBRIDGE**'s services will be able to carry out queries on harmonized databases, to use models for simulation and forecasting, to analyse datasets to extract comprehensive information on the location, status and trend of fish stocks and fisheries or to identify suitable locations for aquaculture companies, etc.

As potential end-users, we would like to collect your feedback and further requirements on the **BlueBRIDGE** offer to develop services that concretely meet your expectations.

The survey will only take you 5 minutes, thank you for your interest!

* 1. General information

Company Name -	<input type="text"/>
Department	<input type="text"/>
Last name - First name	<input type="text"/>
City	<input type="text"/>
Country	<input type="text"/>
E-mail address	<input type="text"/>

* 2. What is your organization type?

- University
- Research Institute
- Environmental Consulting Company
- Private company (Including SME)
- Professional Organization
- Policy Maker
- Environmental Association
- Intergovernmental Organization
- National Agency
- Other

12. Within the framework of your current activities, do you use:

- Online databases (FAO, Quadriga, Eurostat, etc)
- Algorithms and modeling software (C++, Python, Java, MatLab, etc)
- Mapping software (ArcGis, MapInfo, QGis, etc)

13. Below you can find some common issues encountered by stakeholders working in the marine/maritime field. Do you think BlueBRIDGE solutions may help you to overcome some of them? If so, please indicate below.

- Unavailability of data
- Harmonization of the data
- Complexity of the tool
- Impossibility for third parties to share or modify data
- Tool does not meet your expectations
- Other

14. If other, please specify:

15. Regarding the functionalities offered by BlueBRIDGE, are there some others you would like to see developed?

16. Would you be interested to attend a workshop presenting the different tools and services offered by the BlueBRIDGE project?

- Yes
- Maybe
- No

17. Would you be interested in receiving the BlueBRIDGE newsletter? It will keep you up to date with all progress and the latest results surrounding the project.

- Yes
- No